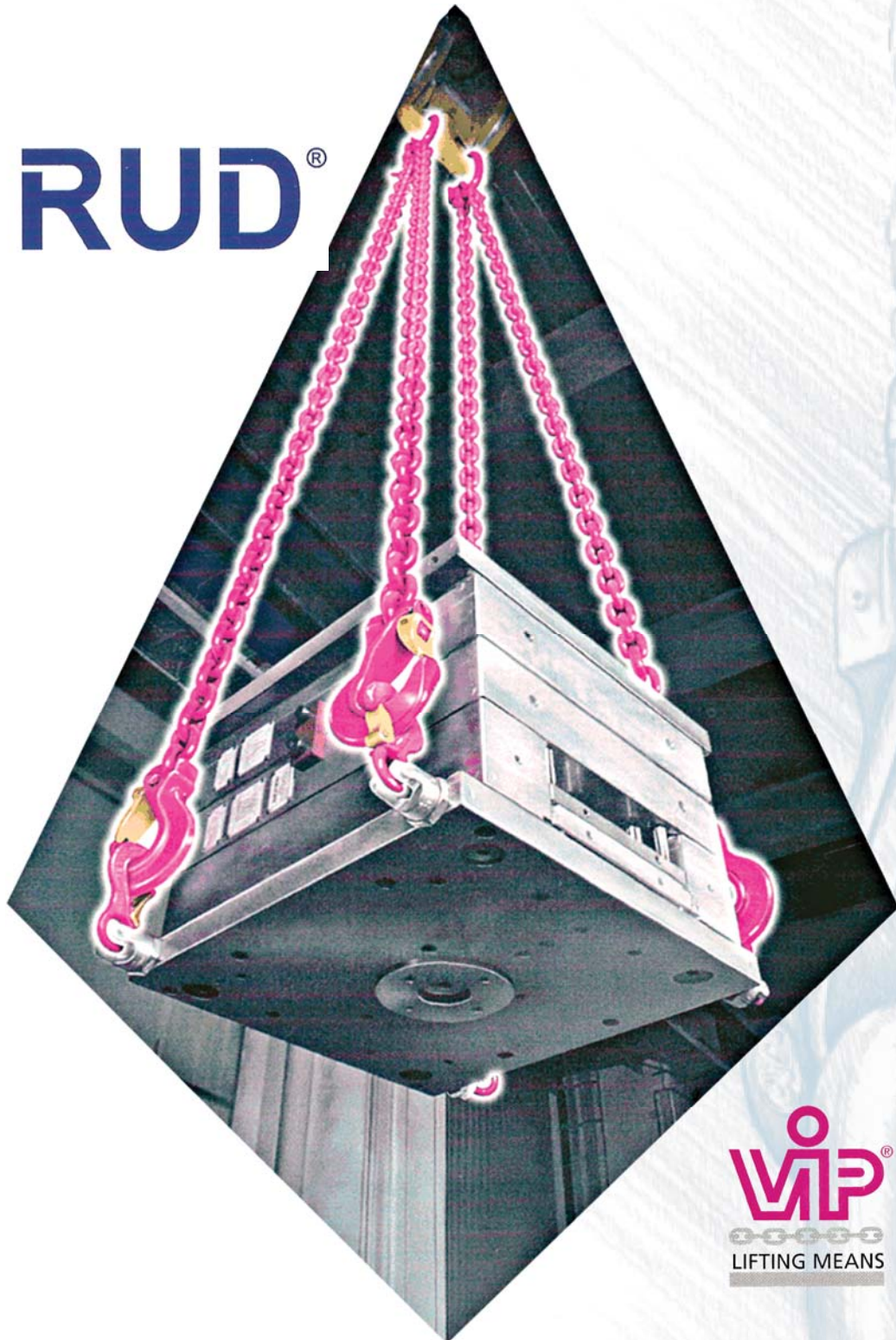
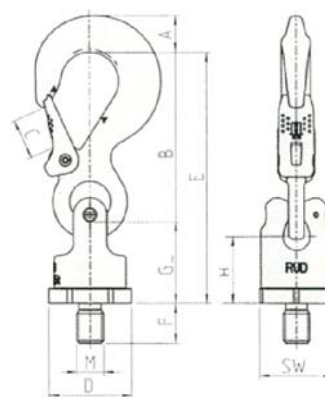


 **RUD**<sup>®</sup>



<sup>®</sup>  
  
LIFTING MEANS

## 1. Kuka okretna PowerPoint-Star PP-S Swivelling hook PowerPoint-Star PP-S



Usuglašen sa strojarskim direktivama 98/37/EC.  
Complies with the machinery directives 98/37/EC.

Tip Type	Nosivost Working Load Limit	A	B	C	D	E	F Standard	F	G	H	M	SW	Težina Weight	Okretni moment Torque	Ref. br. Ref.-No. (Standard)	Ref. br. Ref.-No. (Vario)
t	mm	mm	mm	mm	mm	mm	mm	mm	mm	mm	mm	mm	kg			
PP-S-0,63t-M12	0,63	13	75	18	40	116	18	19-145	41	33	12	36	0,4	Ručno uvrtnje s viličastim ključem Hand tight with spanner	7990719	8600310
PP-S-1,5t-M16	1,5	20	97	25	46	147	24	26-180	50	40	16	41	1,0		7989719	8600311
PP-S-2,5t-M20	2,5	28	126	30	61	187	30	31-200	61	47	20	55	1,7		7989075	8600302
PP-S-4t-M24	4,0	36	150	35	78	227	36	37-255	77	60	24	70	3,2		7989076	8600313
PP-S-5t-M30	5,0(6,7)	37	174	40	95	267	45	46-330	93	71	30	85	7,2		7989720	8600314
PP-S-8t-M36	8,0(10)	49	208	48	100	310	54	55-300	102	76	36	90	9,2		7989077	8600305
PP-S-0,63t-1/2"-13UNC	0,63	13	75	18	40	116	18	19-145	41	33	12	36	0,4	Ručno uvrtnje s viličastim ključem Hand tight with spanner	7990720	8600310
PP-S-1,5t-5/8"-11UNC	1,5	20	97	25	46	147	24	26-180	50	40	16	41	1,0		7989908	8600311
PP-S-2,5t-3/4"-10UNC	2,5	28	126	30	61	187	30	31-200	61	47	20	55	1,7		7989909	8600302
PP-S-2,5t-7/8"-9UNC	2,5	28	126	30	61	187	30	31-200	61	47	20	55	1,7		7989910	8600302
PP-S-4t-1"-8UNC	4,0	36	150	35	78	227	36	37-255	77	60	24	70	3,2		7989911	8600313
PP-S-5t-1 1/4"-7UNC	5,0(6,7)	37	174	40	95	267	45	46-330	93	71	30	85	7,2		7989912	8600314
PP-S-8t-1 1/2"-6UNC	8,0(10)	49	208	48	100	310	54	55-300	102	76	36	90	9,2	7989913	8600305	

Dvostruki kuglični ležaj za slobodno okretanje i lako pritezanje navoja.  
Prikladan za sve načine dizanja/vučenja npr. za kuke, prstene i priveznice.  
Deblji tip kuke sprečava zloupotrebu i otporan je na savijanje.  
Nije prikladna za stalno okretanje pod opterećenjem.  
Moguće ju je okretati za 90° oko osi vijka iako je pod punim opterećenjem.



Povećana nosivost pri vertikalnom opterećenju  
Increased WLL at vertical load direction (straight lift)

Double ballbearing for free turning and soft winding.  
Suitable for all lifting/lashing means for example hooks, rings and slings.  
Thickened type of the hook prevents handling malpractices and resists bending.  
Not suitable for permanent swiveling under load.  
Even under full load, can be turned in a 90° position from the bolt center line.

## 2. Prsten PP-B za spajanje kuka

### PP-B - the ring connection for hook assembling

Četverostruko ispitana sigurnost!

Cr, Ni, Mo - čelik posebno toplinski obrađen i ugašen.

Brza amortizacija zbog lakog rukovanja.

Moguće ga je okretati za 90° oko osi vijka iako je pod punim opterećenjem..

Nije prikladna za stalno okretanje pod opterećenjem.

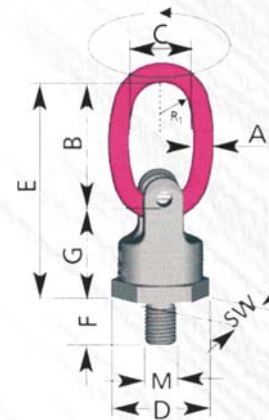
*4 times proofed safety!*

*Cr, Ni, Mo-steel special quenched and tempered.*

*Fast amortization because of easy handling.*

*Can be turned under full load even a 90° position from the bolt center line.*

*Not suitable for permanent swivelling under full load.*



Tip Type	Nosivost Working Load Limit	A	B	C	D	E	F	G	M	SW	Težina Weight	Ref. br. Ref.-No. metrički metric	Ref. br. Ref.-No. imperialni imperial	
t	mm	mm	mm	mm	mm	mm	mm	mm	mm	mm	kg			
PP-B-0,63t-M12	0,63	9	65	35	40	105	18	41	12	36	15	0,35	7989522 0,63t-1/2"-13UNC	7989901
PP-B-1,5t-M16	1,5	11	65	35	46	115	24	50	16	41	15	0,6	7989523 1,5t-5/8"-11UNC	7989902
PP-B-2,5t-M20	2,5	13	75	40	61	135	30	61	20	55	18	1,1	7989081 2,5t-3/4"-10UNC	7989903
	2,5	13	75	40	61	135	30	61		55	18	1,1	-- 2,5t-7/8"-9UNC	7989904
PP-S-4t-M24	4,0	16	95	45	78	172	36	77	24	70	20	2,1	7989082 4t-1"-8UNC	7989905
PP-S-5t-M30	5,0(6,7)	21	130	60	95	223	45	93	30	85	25	4,5	7989524 5t-1 1/4"-7UNC	7989906
PP-S-8t-M36	8,0(10)	24	140	65	100	242	54	102	36	90	28	6,1	7989083 8t-1 1/2"-6UNC	7989907



**Povećana nosivost pri vertikalnom opterećenju!**  
Increased WLL at vertical load direction (straight lift)

## 3. Prsten PP-VIP za direktno spajanje VIP lanca

### PP-VIP - for direct chain connection of the VIP chain

Četverostruko ispitana sigurnost!

Cr, Ni, Mo - čelik posebno toplinski obrađen i ugašen.

Brza amortizacija zbog lakog rukovanja.

Moguće ga je okretati za 90° oko osi vijka iako je pod punim opterećenjem..

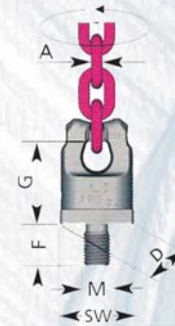
*4 times proofed safety!*

*Cr, Ni, Mo-steel special quenched and tempered.*

*Fast amortization because of easy handling.*

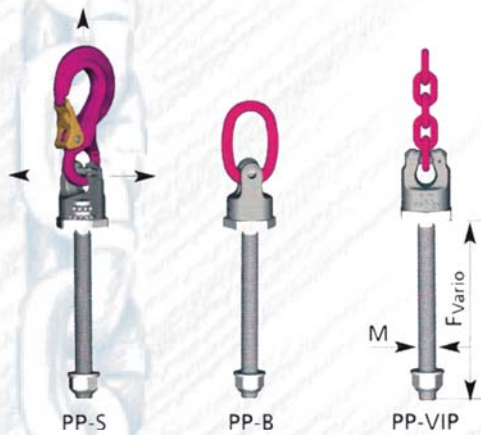
*Can be turned under full load even a 90° position from the bolt center line.*

*Not suitable for permanent swivelling under full load.*



Tip Type	Nosivost Working Load Limit	A VIP-Chain- connection	D	F	G	M	SW	Težina Weight	Ref. br. Ref.-No. metrički metric	Ref. br. Ref.-No. imperialni imperial
t	mm	mm	mm	mm	mm	mm	mm	kg		
PP-VIP4-0,63t-M12	0,63	4	40	18	41	12	36	0,35	7989525 0,63t-1/2"-13UNC	7989920
PP-VIP-1,5t-M16	1,5	6	46	25	50	16	41	0,45	7989526 1,5t-5/8"-11UNC	7989921
PP-VIP-2,5t-M20	2,5	8	61	30	61	20	55	0,95	7989527 2,5t-3/4"-10UNC	7989922
	2,5	8	61	30	61	20	55	0,95	-- 2,5t-7/8"-9UNC	7989923
PP-VIP-4t-M24	4,0	16	78	36	77	24	70	2,2	7989528 4t-1"-8UNC	7989924
PP-VIP-5t-M30	5,0(6,7)	21	95	45	93	30	85	3,5	7989529 5t-1 1/4"-7UNC	7989925
PP-VIP-8t-M36	8,0(10)	24	100	54	102	36	90	5,2	7989530 8t-1 1/2"-6UNC	7989926

**4. PP-S/PP-B/PP-VIP - svi tipovi su posebnih dužina navoja**  
*PP-S/PP-B/PP-VIP - all types in special thread lengths*



Tip Type	Nosivost Working Load Limit	Veličina navoja Thread size	F-Vario max.	Veličina navoja Thread size	F-Vario max.
	t		mm		mm
So-PP-S/PP-B/PP-VIP	0,6(0,63)	M12	140	½"-13UNC	45
So-PP-S/PP-B/PP-VIP	1,0(1,5)	M14	65	-	-
So-PP-S/PP-B/PP-VIP	1,3(1,5)	M16	180	5/8"-11UNC	55
So-PP-S/PP-B/PP-VIP	2,5	M20	200	-	-
So-PP-S/PP-B/PP-VIP	3,5(4)	M24	255	1"-8UNC	74
So-PP-S/PP-B/PP-VIP	5,0(6,7)	M30	330	1 1/4"-7UNC	91
So-PP-S/PP-B/PP-VIP	8,0(10)	M36	300	-	-

**I** Molim Vas navedite tip, veličinu navoja i F-vario!  
 Please indicate type, thread size and F-vario!

**5. Prsten nosivi s vijkom - WBG-V**  
*Load Ring bolted WBG-V*

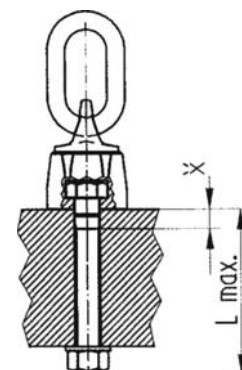
Opteretljiv u svim smjerovima.  
 Okretan ako je opterećen vertikalno.  
 Nije prikladan za stalno okretanje pod punim opterećenjem, posebno u smjeru 90°.  
 Jednostavna montaža, potreban je samo otvor s navojem.  
 Na raspolaganju su različite dužine (Vario).  
 Može biti upotrebljen i na prolaznim otvorima



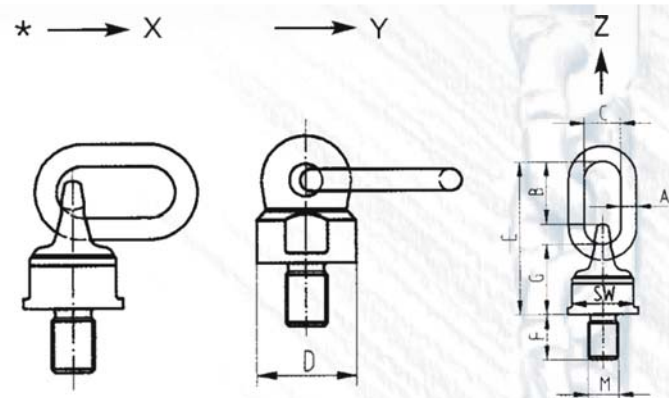
Tip Type	Nosivost Working Load Limit	A	B	C	D	E	F Standard	G max.	M	SW	X	Težina Weight	Navoj Torque	Ref. br. Ref.-No. (Standard)	Ref. br.* Ref.-No.* (Vario)
	t	mm	mm	mm	mm	mm	mm	kg	mm	mm	mm	kg			
WBG-V 0,3-M8	0,3(0,4)	8	33	29	33	76	13	102	36	8	38	18	0,25	7103720	8600230
WBG-V 0,45-M10	0,45(0,6)	8	33	29	36	78	17	122	38	10	30	19	0,3	7103715	8600231
WBG-V 0,6-M12	0,6(0,75)	10	51	35	42	105	21	140	45	12	36	19	0,4	7100180	8600232*
WBG-V 1,3-M16	1,3(1,5)	13	47	38	48	114	25	180	54	16	41	28	0,6	7100430	8600233*
WBG-V 2,0-M20	2,0(2,5)	13	56	35	64	135	33	223	65	20	55	30	1,1	7100800	8600234*
WBG-V 3,5-M24	3,5(4,0)	18	68	40	81	172	40	255	87	24	70	25	2,7	7100640	8600235*
WBG-V 5,0-M30	5,0(6,0)	22	93	50	99	220	50	330	105	30	85	32	5,5	7100650	8600236*

Loadable in any direction.  
 Turnable under load in vertical direction.  
 Not suitable permanent swivelling under full load, especially in 90° direction.  
 Simple installation, just a thread hole is required.  
 Variable lengths (Vario) available.  
 Can also be used for through holes.

**I** 360° okretanje / 180° gibljiv  
 Povećana nosivost pri vertikalnom opterećenju  
 360° swivelling/180° pivoting  
 Increased WLL at vertical load direction (straight lift)



**6. Vijak spojni nosivi - WBG**  
Load Ring bolted WBG



Nominal WLL - worst case  
Ring not adjusted to pull direction

Nominalno dopušteno opterećenje - najgora mogućnost ako prsten nije podešen u smjeru opterećenja

Tip Type	Nosivost Working Load Limit	A	B	C	∅D	E	F	F Vario	G	M	SW	Težina Weight	Navoj Torque	Ref. br. Ref.-No.
	t	mm	mm	mm	mm	mm	mm	mm	mm	mm	mm	kg		F F <sub>vario</sub>
WBG 6-spec. obrađen	6(7,5)	22	87	50	90	210	-	50-300	95	33	80	-		8600150
WBG 8-M36	8(10)	22	87	50	90	210	54	-	95	36	80	4,6	51 872	
WBG 8-spec. obrađen	8(10)	22	87	50	90	210	-	50-300	95	36-39	80	-	86 00 151	
WBG 10-M42	10(12,5)	26	112	65	98	240	63	-	100	42	85	6,3	51 874	
WBG 10-M48	10(12,5)	26	112	65	98	240	68	-	100	48	85	6,5	51 930	
WBG 10-spec. obrađen	10(12,5)	26	112	65	98	240	-	60-300	100	42-52	85	-	86 00 152	
WBG 15-M56	15(18)	32	120	70	120	280	84	-	130	56	95	11,3	51 941	
WBG 15-M64	15(18)	32	120	70	120	280	94	-	130	64	95	11,6	71 00 406	
WBG 15-spec. obrađen	15(18)	32	120	70	120	280	-	80-300	130	56-85	95	-	86 00 153	
WBG 25-M72	25(30)	40	125	80	160	332	108	-	163	72-85	130	27	7990332	
WBG 25-spec. obrađen	25(30)	40	125	80	160	332	-	100-300	163	72	130	-	8600155	
WBG 30-M30	30(35)	40	125	80	170	332	120	-	163	80	130	28,7	7990333	
WBG 30-spec. obrađen	30(35)	40	125	80	170	332	-	100-300	163	80-85	130	-	8600156	
WBG 35-M90	35(40)	40	125	80	170	332	135	-	165	90	130	30,7	79 85 363	
WBG 35-spec. obrađen	35(40)	40	125	80	170	332	-	100-300	165	90-150	130	-	86 00 154	

**\*Pažnja:** Tijekom podizanja, prsten točke podizanja može biti prikopčan u bilo kojem smjeru. Utisnuta nosivost WLL je za najgori mogući slučaj (vidi sliku X). Ako je prsten ručno podešen u horizontalni položaj, možemo izabrati višu nosivost WLL, upisanu u zagradama (), (vidi sliku Y). U slučaju pravocrtnog podizanja (vidi sliku Z: okomiti smjer opterećenja) nosivost WLL je maksimalna.

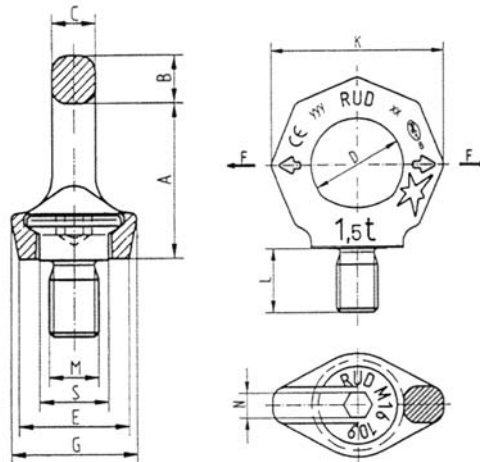
**Za teška opterećenja koja treba okretati oko osi i vrtiti .**

**\*Caution:** During lifting, the ring of the lifting point can engage in any position. The embossed WLL is for the worst case scenario (see image X). If the ring is manually adjusted to the horizontal position, higher WLL values in brackets () can be chosen (see image Y). In case of straight pull (see image Z: vertical load direction) Maximum WLL.

**For heavy loads which have to be turned and swivelled.**

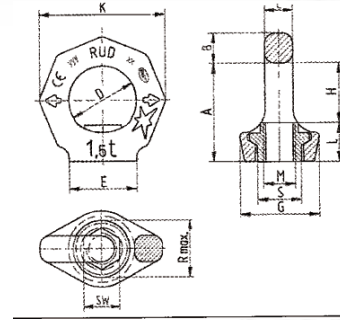
Suglasno uputama za upotrebu  
According to the user instructions

**7. Vijak okasti "STARPOINT" - VRS**  
 Eye bolt "STARPOINT" - VRS



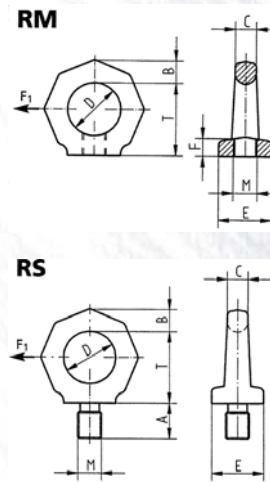
Tip Type	Nosivost Working Load Limit	A	B	C	D	E	G	K	L	M	N	S	Težina Weight	Ref. br. Ref.-No.	Ref. br. Ref.-No.
	t	mm	mm	mm	mm	mm	mm	mm	mm	mm	mm	mm	kg		
VRS-M8	0,4	34	11	8,5	25	25	28	47	12	8	6	16	0,1	71 00 554	85 00 911
VRS-M10	0,4	34	11	8,5	25	25	28	47	15	10	6	15	0,1	79 82 219*	71 04 029
VRS-M12	0,75	42	13	10	30	30	34	56	18	12	8	18	0,2	79 82 220*	71 01 313
VRS-M16	1,5	49	15	14	35	35	40	65	24	16	10	22	0,3	79 82 221**	71 01 314
VRS-M20	2,3	57	17	16	40	40	50	75	30	20	12	27,5	0,5	79 82 222**	71 01 315
VRS-M24	3,2	69	21	19	48	48	60	90	36	24	14	33	0,9	79 82 223**	71 01 316
VRS-M30	4,5	86	26	24	60	60	75	112	45	30	17	41,5	1,7	79 82 224***	71 01 317
VRS-M36	7	103	32	29	72	75	90	135	54	36	22	49,5	2,9	79 84 198	79 84 201
VRS-M42	9	120	38	34	82	85	105	158	63	42	24	58	4,6	79 84 199	79 84 202
VRS-M48	12	137	43	38	94	100	120	180	72	48	27	66	7,0	79 84 200	79 84 203
VRS-3/8"-16UNC	0,4	34	11	8,5	25	25	28	47	15	3/8"	1/4"	15	0,1	79 03 959	71 04 480
VRS-1/2"-13UNC	0,75	42	13	10	30	30	34	56	18	1/2"	5/16"	18	0,2	79 03 960	71 04 481
VRS-5/8"-11UNC	1,5	49	15	14	35	35	40	65	24	5/8"	3/8"	22	0,3	79 03 961	71 04 482
VRS-3/4"-10UNC	2,3	57	17	16	40	40	50	75	30	3/4"	1/2"	27,5	0,5	79 03 962	71 04 483
VRS-7/8"-9UNC	2,3	57	17	16	40	40	50	75	32	7/8"	1/2"	27,5	0,6	79 03 963	71 04 484
VRS-1"-8UNC	3,2	69	21	19	48	48	60	90	36	1"	9/16"	33	0,9	79 03 964	71 04 485
VRS-1 1/4"-7UNC	4,5	86	26	24	60	60	75	112	45	1 1/4"	5/8"	41,5	1,7	79 03 965	71 04 486
VRS-1 1/2"-6UNC	7	103	32	29	72	75	90	135	54	1 1/2"	7/8"	49,5	2,9	79 03 966	79 84 221
VRS-1 3/4"-5UNC	9	120	38	34	82	85	105	158	63	1 3/4"	1"	58	4,6	79 03 967	71 04 488
VRS-2"-4,5UNC	12	137	43	38	94	100	120	180	72	2"	1 1/8"	66	7,0	79 03 968	79 84 223

## 8. Matica okasta "STARPOINT" - VRM Eye nut "STARPOINT" - VRM



Tip Type	Nosivost Working Load Limit	A	B	C	D	E	G	H	K	L	M	R <sub>max</sub>	S	SW	Težina Weight	Ref. br. Ref.-No.
t	mm	mm	mm	mm	mm	mm	mm	mm	mm	mm	mm	mm	mm	mm	kg	
VRM-M8	0,4	34	11	8,5	25	25	28	20	47	14	8	20	16	12	0,1	7992989
VRM-M10	0,4	34	11	8,5	25	25	28	20	47	14	10	20	16	12	0,1	7990311
VRM-M12	0,75	42	13	10	30	30	34	25	56	17	12	24	20	14	0,2	7990312
VRM-M16	1,5	51	15	14	35	33,5	40	30	65	21	16	30	22(35,5)	19	0,3	7990314
VRM-M20	2,3	57	17	16	40	40	50	34	75	23	20	37	29	24	0,5	7990315
VRM-M24	3,2	69	21	19	48	50	60	40	90	29	24	45	35	30	0,9	7990316
VRM-M30	4,5	86	26	24	60	60	75	52	112	34	30	56	44	36	1,5	7993008

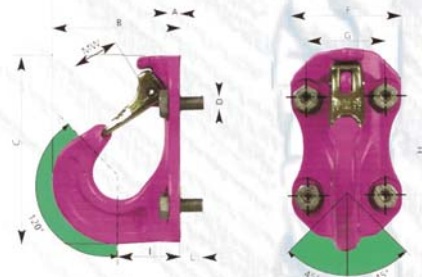
## 9. Vijak/-matica okasti RS/RM Eye bolt/-nut RS/RM



Tip Type	Nosivost Working Load Limit	A	B	C	D	E	F	M	T	Težina Weight	Ref. br. Ref.-No.	
											RS	RM
t	mm	mm	mm	mm	mm	mm	mm	mm	mm	kg		
RS - M6	0,1	12	11	10	25	25	11	6	35	0,1	61 401	55 254
RS - M8	0,2	12	11	10	25	25	11	8	35	0,1	61 402	55 255
RS - M10	0,25	15	11	10	25	25	11	10	35	0,1	56 397	55 258
RS - M12	0,4	18	13	12	30	30	12	12	41	0,2	56 398	55 271
RS - M14	0,75	21	15	14	35	35	13	14	48	0,25	56 403	55 281
RS - M16	1	24	15	14	35	35	13	16	48	0,3	56 404	55 460 (800 kg)
RS - M20	1,5	30	17	16	40	40	16	20	55	0,45	56 407	55 343
RS - M24	2	36	21	20	50	50	20	24	70	0,7	56 408	55 394
RS - M30	3	45	26	24	60	60	25	30	85	1,6	56 409	55 438
RS - M36	4	54	43	38	90	100	37	36	130	6,0	56 954	53 093
RS - M42	6	53	43	38	90	100	37	42	130	6,2	56 955	53 095
RS - M48	8	68	43	38	90	100	37	48	130	6,4	56 956	53 098

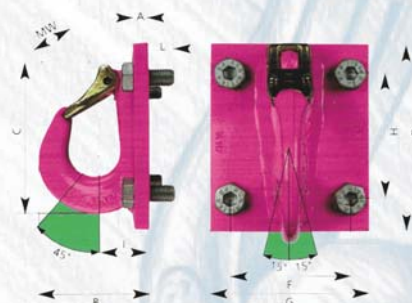


### 13. Kuka za bagere za spajanje vijkom VABH-B Excavator hook for bolting VABH-B



Tip Type	Nosivost Working Load Limit	MW	A	B	C	F	G	H	I	L	RUD Univerz. vijak RUD Universal-bolt	Težina Weight	Ref. br. s RUD vijcima Ref.-No. with RUD bolts
t	mm	mm	mm	mm	mm	mm	mm	mm	mm	mm		kg	
VABH-B 1,5t	1,5	25	6,5	78	117	70	48	60	38	15	4xM10	0,78	7991205
VABH-B 2,5t	2,5	30	7,5	101	148	85	60	75	49	18	4xM12	1,73	7991206
VABH-B 4t	4	35	10	122	171	104	70	90	59	25	4xM16	3,00	7991207
VABH-B 6,7t	6,7	40	12	156	208	120	85	110	70	30	4xM20	5,60	8502238

### 14. Kuka za bagere za spajanje vijkom VCGH-G Excavator hook for bolting VCGH-G



Tip Type	Nosivost Working Load Limit	MW	A	B	C	D	F	G	H	I	L	RUD Univerz. vijak RUD Universal-bolt	Težina Weight	Ref. br. s RUD vijcima Ref.-No. with RUD bolts
t	do 45°	mm	mm	mm	mm	mm	mm	mm	mm	mm	mm		kg	
VCGH-G16*	16	48	15	141	200	220	120	170 (100)	150	70	50	4xM24	6,4	7984048*
VCGH-G20	20	63	20	187	272	288	150	210 (120)	220	87	50	6xM24	10,4	7984311
VCGH-G22	22	36	20	195	276	292	150	240 (120)	220	92	50	6xM24	17,5	7984313

### 15. Pričvršćenje za privarivanje WPP-S Welding PowerPoint WPP-S



Tip Type	Nosivost Working Load Limit	A	B	C	D	E	G	Zavar Weld	Težina Weight	Ref. br. Ref.-No.
	t	mm	mm	mm	mm	mm	mm		kg	
WPP-S-0,63t	0,63	13	75	18	40	115	40	⊔3,5	0,4	7990721
WPP-S-1,5t	1,5	20	97	25	46	147	50	⊔4,5	1,0	7989944
WPP-S-2,5t	2,5	28	126	30	61	187	61	HV3+3,5	1,5	7989945
WPP-S-4t	4,0	36	150	35	78	227	77	HV3+ 5	3,3	7989946
WPP-S-5t	5,0 (6,7)	37	174	40	95	267	93	HV3+ 8	7,1	7989947
WPP-S-8t	8,0 (10)	49	208	48	100	310	102	HV3+10	8,2	7989948

**I** () Povećana nosivost pri okomitom opterećenju.  
() Increased WLL in vertical loaded direction (straight lift).

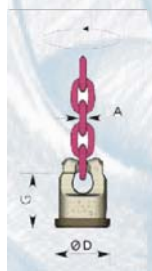
### 16. Pričvršćenje za privarivanje WPP-B Welding PowerPoint WPP-B



Tip Type	Nosivost Working Load Limit	A	B	C	D	E	G	R <sub>1</sub>	Zavar Weld	Težina Weight	Ref. br. Ref.-No.
	t	mm	mm	mm	mm	mm	mm	mm		kg	
WPP-B-0,63t	0,63	9	65	35	40	105	40	15	⊔3,5	0,35	7989954
WPP-B-1,5t	1,5	11	65	35	46	115	50	15	⊔4,5	0,6	7989955
WPP-B-2,5t	2,5	13	74	40	61	135	61	18	HV3+3,5	1,0	7989956
WPP-B-4t	4,0	16	95	45	78	172	77	20	HV3+ 5	2,3	7989957
WPP-B-5t	5,0 (6,7)	19	130	60	95	223	93	25	HV3+ 8	4,7	7989958
WPP-B-8t	8,0 (10)	24	140	65	100	242	102	28	HV3+10	5,3	7989959

**I** () Povećana nosivost pri okomitom opterećenju.  
() Increased WLL in vertical loaded direction (straight lift).

### 17. Pričvršćenje za privarivanje WPP-VIP Welding PowerPoint WPP-VIP



Tip Type	Nosivost Working Load Limit	A VIP-chain connection	D	G	Zavar Weld	Težina Weight	Ref. br. bez VIP-lanca Ref.-No. without VIP-chain
	t	mm	mm	mm		kg	
WPP-VIP-4-0,63t	0,63	4	40	40	⊔3,5	0,25	7989960
WPP-VIP-6-1,5t	1,5	6	46	50	⊔4,5	0,45	7989961
WPP-VIP-8-2,5t	2,5	8	61	61	HV3+4,5	0,85	7989962
WPP-VIP-10-4t	4,0	10	78	77	HV3+ 5	2,1	7989963
WPP-VIP-13-5t	5,0 (6,7)	13	95	93	HV3+ 8	3,4	7989964
WPP-VIP-16-8t	8,0 (10)	16	100	102	HV3+10	4,5	7989965

**I** () Povećana nosivost pri okomitom opterećenju.  
() Increased WLL in vertical loaded direction (straight lift).

**Obavijest: Slijedite nupatak za korištenje!**  
**Notice: Follow the instructions for use!**

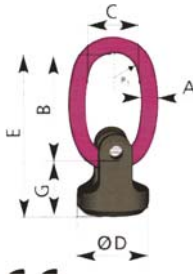
## 18. Pričvrščenje za privarivanje WPPH-S Welding PowerPoint WPPH-S



Tip Type	Nosivost Working Load Limit	A	B	C	D	E	G	Zavar Weld	Težina Weight	Ref. br. Ref.-No.
	t	mm	mm	mm	mm	mm	mm		kg	
WPPH-S-0,63t	0,63	13	75	18	34	109	34	⊥3,5	0,35	7990722
WPPH-S-1,5t	1,5	20	97	25	40	141	44	⊥4,5	0,95	7989966
WPPH-S-2,5t	2,5	28	126	30	53	179	53	HV3+5	1,4	7989967
WPPH-S-4t	4,0	36	150	35	68	217	66	HV3+6	3,2	7989968
WPPH-S-5t	5,0 (6,7)	37	174	40	83	253	79	HV3+8	6,9	7989969
WPPH-S-8t	8,0 (10)	49	208	48	88	296	88	HV3+10	8,0	7989970

**I** () Povećana nosivost pri okomitom opterećenju.  
() Increased WLL in vertical loaded direction (straight lift).

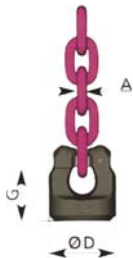
## 19. Pričvrščenje za privarivanje WPPH-B Welding PowerPoint WPPH-B



Tip Type	Nosivost Working Load Limit	A	B	C	D	E	G	R <sub>1</sub>	Zavar Weld	Težina Weight	Ref. br. Ref.-No.
	t	mm	mm	mm	mm	mm	mm	mm		kg	
WPPH-B-0,63t	0,63	9	65	35	34	99	34	15	⊥3,5	0,3	7989976
WPPH-B-1,5t	1,5	11	65	35	40	109	44	15	⊥4,5	0,5	7989977
WPPH-B-2,5t	2,5	13	74	40	53	127	53	18	HV3+5	0,6	7989978
WPPH-B-4t	4,0	16	95	45	68	163	66	20	HV3+6	2,2	7989979
WPPH-B-5t	5,0 (6,7)	19	130	60	83	209	79	25	HV3+8	4,5	7989980
WPPH-B-8t	8,0 (10)	24	140	65	88	228	88	28	HV3+10	5,1	7989981

**I** () Povećana nosivost pri okomitom opterećenju.  
() Increased WLL in vertical loaded direction (straight lift).

## 20. Pričvrščenje za privarivanje WPPH-VIP Welding PowerPoint WPPH-VIP



Tip Type	Nosivost Working Load Limit	A VIP-chain connection	D	G	Zavar Weld	Težina Weight	Ref. br. bez lanca Ref.-No. without VIP-chain
	t	mm	mm	mm		kg	
WPPH-VIP-4-0,63t	0,63	4	34	34	⊥3,5	0,2	7989982
WPPH-VIP-6-1,5t	1,5	6	40	44	⊥4,5	0,35	7989983
WPPH-VIP-8-2,5t	2,5	8	53	53	HV3+5	0,75	7989984
WPPH-VIP-10-4t	4,0	10	68	66	HV3+6	2,0	7989985
WPPH-VIP-13-5t	5,0 (6,7)	13	83	79	HV3+8	3,2	7989986
WPPH-VIP-16-8t	8,0 (10)	16	88	88	HV3+10	4,3	7989987

**I** () Povećana nosivost pri okomitom opterećenju.  
() Increased WLL in vertical loaded direction (straight lift).

**21. Prsten nosivi za privarivanje VLBS**  
*Load ring for welding VLBS*



Tip Type	Nosivost Working Load Limit	A	B	C	D	E	Ø F	G	H	Zavar Weld	Težina Weight	Ref. br. Ref.-No. captive complete	Ref. br. Ref.-No. without spring		
	t	mm	mm	mm	mm	mm	mm	mm	mm	mm	kg				
VLBS 1,5	1,5	32	66	38	25	40	13,5	33	87	14	65	HV5+3	0,35	79 93 035	79 93 115
VLBS 4	4	42	87	51	32	52	16,5	46	112	18	84	HV8+3	0,8	79 93 036	79 93 116
VLBS 6,7	6,7	61	115	67	44	73	22,5	60	157	24	117	HV12+4	1,9	79 93 037	79 93 117
VLBS 10	10	75	129	67	55	71	26,5	60	173	26,5	126	HV16+4	2,9	79 93 040	79 93 118
VLBS 16	16	95	190	100	69	105	26	90	243	40	174	HV25+6	6,8		79 93 141

**22. Prsten nosivi za privarivanje VRBS**  
*Load ring for welding VRBS*



Tip Type	Nosivost Working Load Limit	A	B	C	D	E	F	O	Q	X	T	Zavar Weld	Težina Weight	Ref. br. Ref.-No.
	t	mm	mm	mm	mm	mm	mm	mm	mm	mm	mm	HV+ $\Delta$ a	kg	
VRBS 4	4	62	16	28	48	135	71	17	77	14	65	HV4+3	0,8	79 92 488
VRBS 6,7	6,7	88	20	39	60	170	91	23	101	15	84	HV5,5+3	2,1	79 92 489
VRBS 10	10	100	22	46	65	195	100	28	106	22	95	HV6+4	2,8	79 92 490
VRBS 16	16	130	30	57	90	265	134	36	147	28	127	HV8,5+4	6,6	79 92 491
VRBS 30	30	160	42	78	130	375	195	47	220	37	178	HV15+4	19,0	60267
VRBS 50	50	240	70	120	230	620	340	65	380		313	HV25+8	85,0	56 834

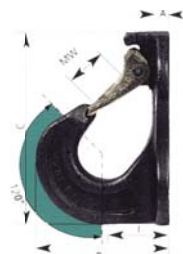
**23. Prsten nosivi za privarivanje s bravom VRBSS**  
*Load ring for welding with locking device VRBSS*



Tip Type	Nosivost Working Load Limit	A	B	C	D	E	F	G	H	X	T	Zavar Weld	Težina Weight	Ref. br. Ref.-No.
	t	mm	mm	mm	mm	mm	mm	mm	mm	mm	mm	HV+ $\Delta$ a	kg	
VRBSS 6,7	6,7	88	20	39	60	170	91	92	7	15	84	HV5,5+3	2,1	79 92 875
VRBSS 10	10	100	22	46	65	195	100	104	7	22	95	HV6+4	2,8	79 92 876
VRBSS 16	16	130	30	57	90	265	134	148	10	28	127	HV8,5+4	6,6	79 92 877

## 24. Kuka za bager WABH-W, za privarivanje, VIP kvalitete

Excavator hook in VIP-quality - for welding WABH-W



Tip Type	Nosivost Working Load Limit	MW	A	B	C	F	I	Zavar Weld	Težina Weight	Ref. br. Ref.-No.
	t		mm	mm	mm	mm	mm		kg	
WABH-W 1,5t	1,5	25	7,5	78	117	70	38	3	0,8	7991208
WABH-W 2,5t	2,5	30	8,5	101	148	85	49	3	1,8	7991209
WABH-W 4t	4	35	11	122	171	104	59	4	3,1	7991210
WABH-W 6,7t	6,7	40	13	156	208	120	70	5	5,9	8502239

## 25. Kuka za bager WCGH-S za privarivanje

Excavator hook WCGH-S weld-on



Tip Type	Nosivost Working Load Limit	MW	A	B	C	D	G	I	Zavar Weld	Težina Weight	Ref. br. Ref.-No.
	t		mm	mm	mm	mm	mm	mm		kg	
WCGH-S 16	10	48	15	141	200	220	100	70	8	5,0	7984047
WCGH-S 20	16	63	20	187	272	288	120	87	8	8,4	7984310
WCGH-S 22	20	63	20	195	276	292	120	92	8	14,5	7984312